

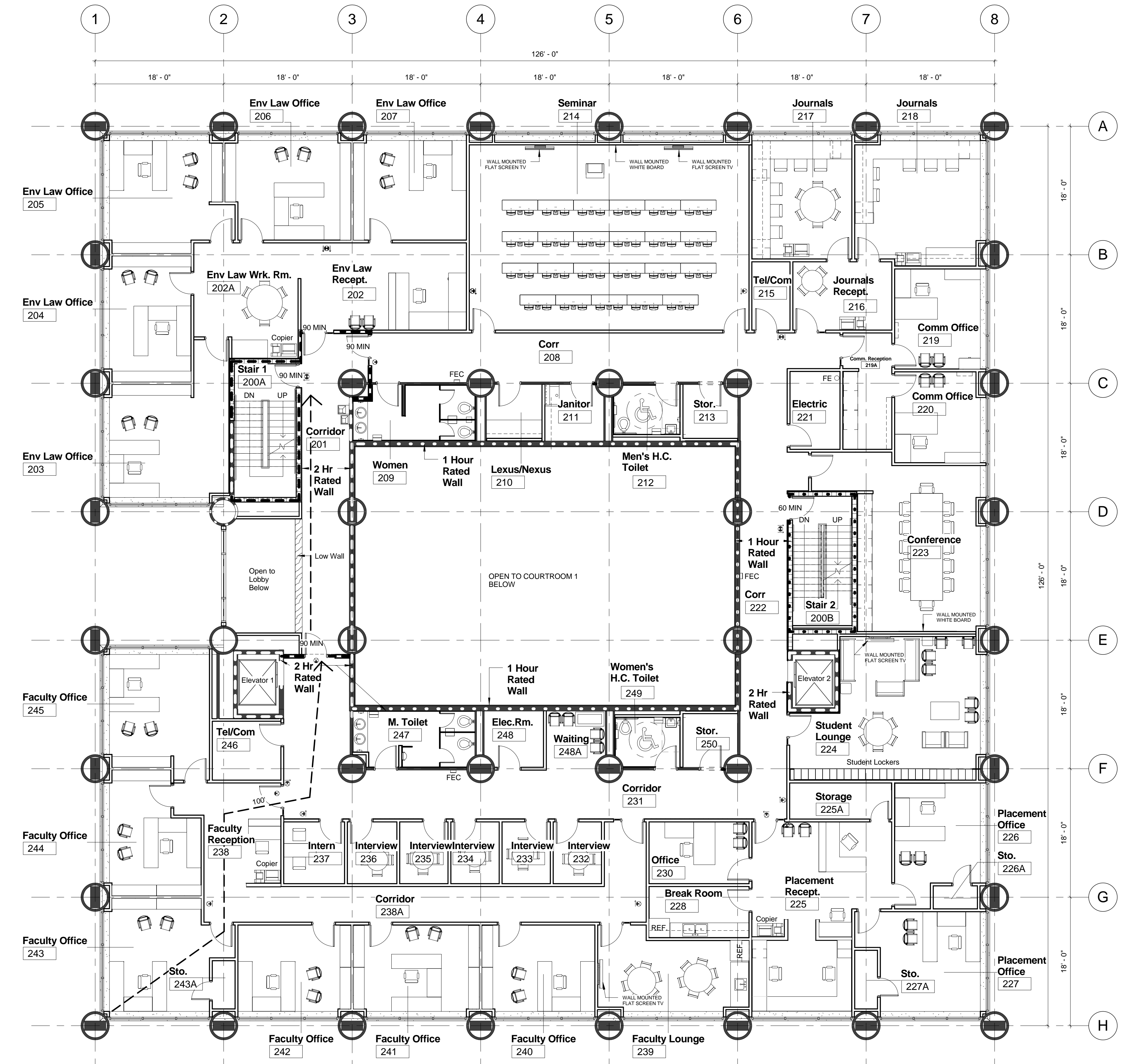
NOTES

LEGEND

- EXISTING TO REMAIN
- NEW GYP / METAL STUD WALL PARTITION
- NEW CMU WALL PARTITION
- 1 HOUR RATED WALL ASSEMBLY
- 2 HOUR RATED WALL ASSEMBLY

- Name**
101 ROOM NAME AND NUMBER SEE SHEET A7.1
- FIRE EXTINGUISHER CABINET - SEE DETAIL 1/A5.1
 - FIRE EXTINGUISHER ON BRACKET - SEE DETAIL 2/A5.1
 - EXIT SIGN
 - 90 MIN. RATED DOOR
 - 60 MIN. RATED DOOR
 - 45 MIN. RATED DOOR
 - 20 MIN. RATED DOOR

BUILT-IN CASEWORK
FOR CASEWORK PLANS
AND ELEVATIONS SEE A10. SHEETS



1 Life Safety/ Furniture Second Floor Plan
CS-6 1/8" = 1'-0"



FSU College of Law
Renovation of the First
District Court of Appeal

10230 Drawn By: JH2
Project Code Checked By: DSB

19 NOVEMBER 2010
Date

Final Contract
Documents

- Revisions
- △
 - △
 - △
 - △
 - △
 - △
 - △
 - △

Life Safety Plan -
Second Floor